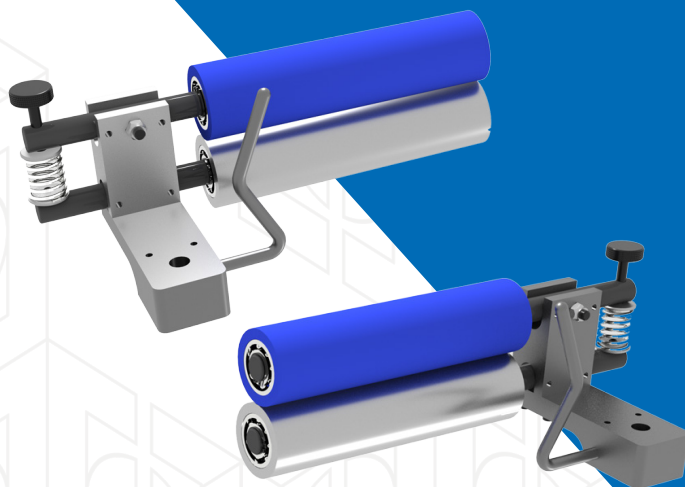




**DOUBLE E**  
G R O U P



# ADJUSTA-PULL NIP TYPE ANTI-WINKLE SYSTEMS



The Adjusta-Pull is an angled nip roller system used to apply outward edge-traction for the elimination of wrinkles in web materials. Featuring dual opposing nip roll assemblies designed to pull the web outward, the Adjusta-Pull effectively eliminates wrinkles to ensure consistent, smooth web handling. Engineered for textiles, nonwovens, paper and plastics, the Adjusta-Pull eliminates wrinkles before they cause defects to the web – eliminating downtime and scrapped materials.

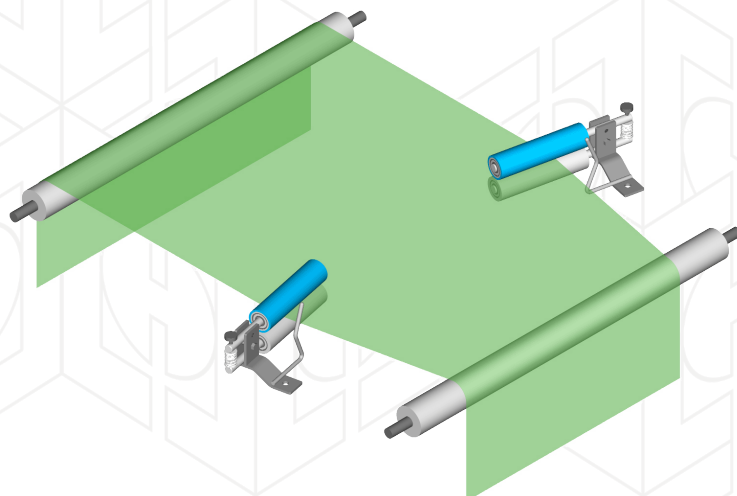
## FEATURES

- Effective smoothing of wrinkles from web material
- Ideal for webs in textiles, nonwovens, paper and plastics converting operations
- Two, ball bearing mounted nip rollers – one rubber, one aluminum
- Machined aluminum frame
- Alignment, web edge convergence, and nip roll pressure adjustments
- No electricity needed - saves energy and money
- Easy installation
- Multiple Adjust-Pull systems can be arranged in sequences of multiple pairs for applications requiring additional web spreading

## ADJUSTA-PULL-SL2

The Adjusta-Pull-SL2 provides a simple, mechanical, energy-free wrinkle-removal solution ideal for standard converting operations.

Comprised of two opposing nip roll assemblies, the Adjusta-Pull-SL2 pulls the material outward to removal wrinkles and smooth web material. By increasing the angular displacement of the Adjusta-Pull-SL2 in the direction of the web flow will increase the spreading action of the web.



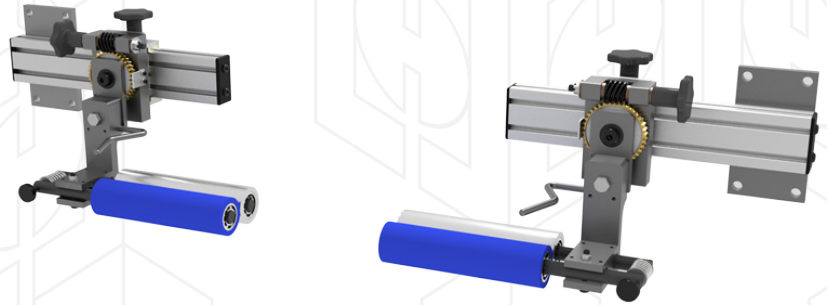
SCAN ME!



**ee-co.com**

## OPTIONS

- Standard 6" or 9" face lengths - one rubber & one aluminum roller
- Other roller treatments available - plasma, silicone, urethane, Teflon®, etc.
- Optional mounting bracket (shown) available with angle adjustment
- Various customization options available for unique applications



## AIR-LOADED ADJUSTA-PULL-AL2

Air-Loaded Adjusta-Pull-AL2 adds air-loaded precision to the standard Adjusta-Pull-SL2 model, making it the preferred choice for high-speed lines or applications requiring fine nip-pressure control. The included pressure regulator helps to accurately adjust the air pressure to accommodate all types of material.

### Features:

- Air loaded for fast and easy web threading
- Very fine pressure adjustment - perfect for very delicate to the toughest web
- Remote open/close option for automated or hard-to-reach installations
- Ideal for paper, film, foil, and plastics converting
- Two, ball bearing mounted nip rollers – one rubber, one aluminum
- Roller treatments such as plasma, silicone, urethane, Teflon®, etc. available
- Optional mounting bracket with angle adjustment available

