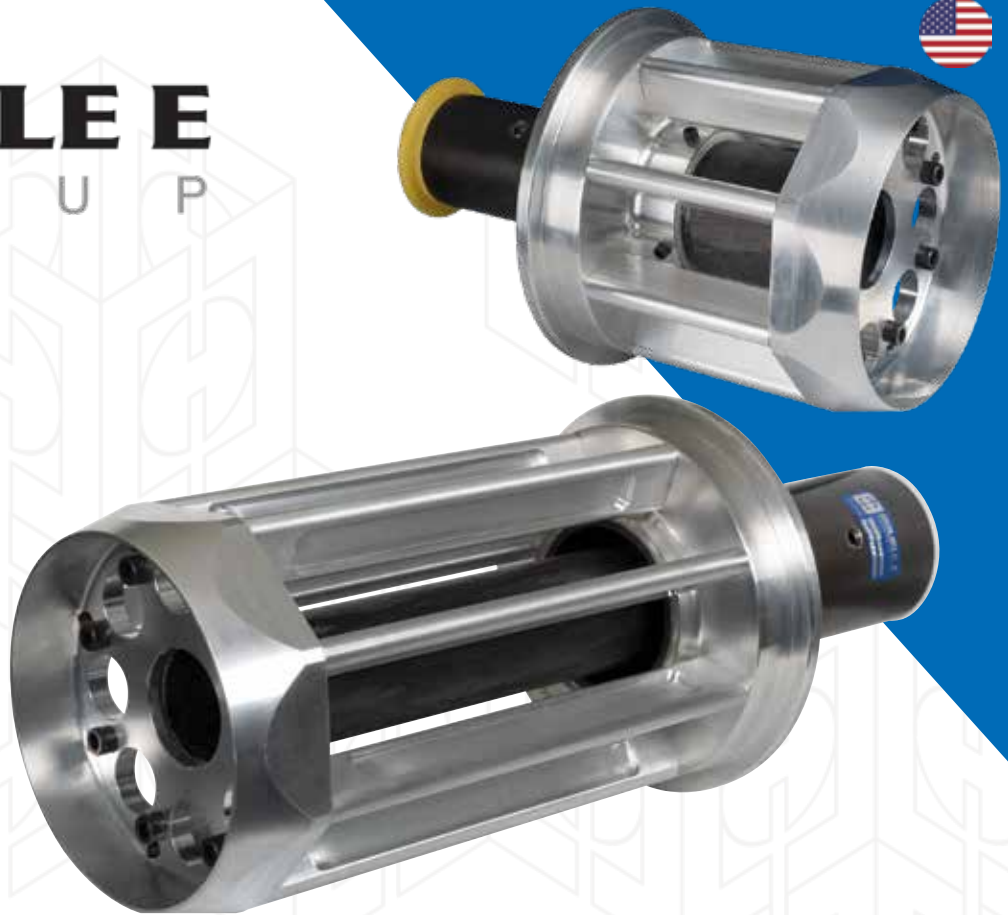




**DOUBLE E**  
G R O U P



# CORE PLUGS



## INNOVATION

Double E Group introduced the tissue industry's first lightweight core plug in 1999. Our CP-1000 core plug was a revolutionary and lightweight design that was easy-to-insert which offered increased productivity and operator safety. Since that time Double E Group's ongoing commitment to innovation has allowed us to continuously improve core plugs using advanced composites, lightweight materials and advanced processes to provide increased performance and higher safety standards. In 2016 the market challenged us to come up with a new lightweight and operator-friendly core plug to be used exclusively at one of the world's largest tissues producers. Our solution was the **CPLW-1000**.

## CPLW-1000

Double E Group's **CPLW-1000** features a ultra-lightweight design built around a carbon fiber central carrier beam and high-performance aluminum ribs. An easy-insert end cap plate simplifies handling and installation, improving both operator efficiency and ease of use.

The result is a core plug that is significantly easier to maneuver, reducing strain on operators and improving overall safety. By replacing older, heavier designs, the **CPLW-1000** helps minimize lifting-related injuries while delivering consistent performance on your line.

SCAN ME!



[ee-co.com](http://ee-co.com)