



***DOUBLE E***  
*Engineering Excellence*

ee-co.com

## EE250 Pneumatic Brake

Compact, customizable and compatible with most rollstands, Double E's EE250 Pneumatic Brake offers efficient, trouble-free tension control in even the most critical applications.

The EE250 is a proven, industry standard modular design, the result of years of research, development and extensive field testing.

Customizable, the EE250 offers 1 to 6 calipers and two air flow options to match your specific requirements. True to our Company motto of Engineering Excellence, the EE250 pneumatic brake features revolutionary cross-drilled and vented rotors that create superior heat dissipation allowing cooler operating temperatures. Our proprietary pad formulation delivers superior brake life with virtual dust free operation that means the end of brake squeal in your plant.

Critical tension control is key to problem-free web operations. Double E's EE250 is a time-proven, high-performance and easy-to-fit pneumatic brake design.

### ***Features:***

- Full range of retrofit packages available
- Compact dimensions with a low profile fan cover
- Excellent heat dissipation
- Superior brake pad life
- Bi-directional cross-drilled disc increases airflow through the disc to effectively cool both sides of the brake even at slow speeds
- 110/240VAC standard flow fan or 24V DC high flow fan options
- Configurable for multiple torque outputs
- Reduced torque calipers available
- Easy to maintain



***Compatible with most rollstands including Langston, BHS, Agnati, Favalessa, Pemco, Torres & others***

***Superior brake pad life***

***Easy swap-out for the most common brake type in the industry***

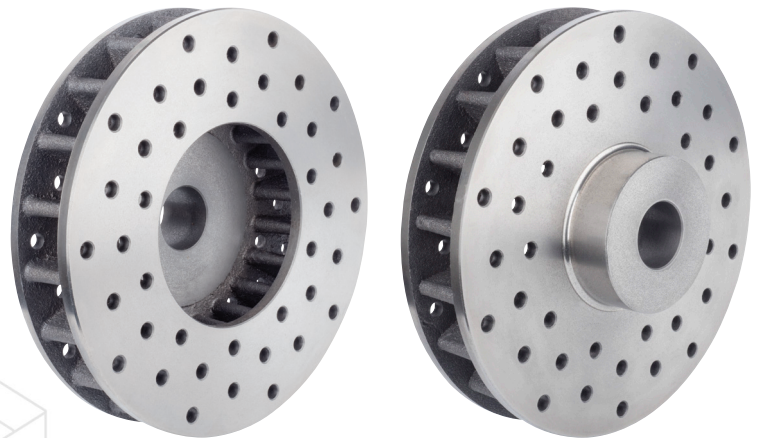
***Quick & Easy Maintenance***

***Critical tension control***

***Excellent heat dissipation***

***Customizable: 1 to 6 calipers***

***Self-enclosed, no cage necessary***

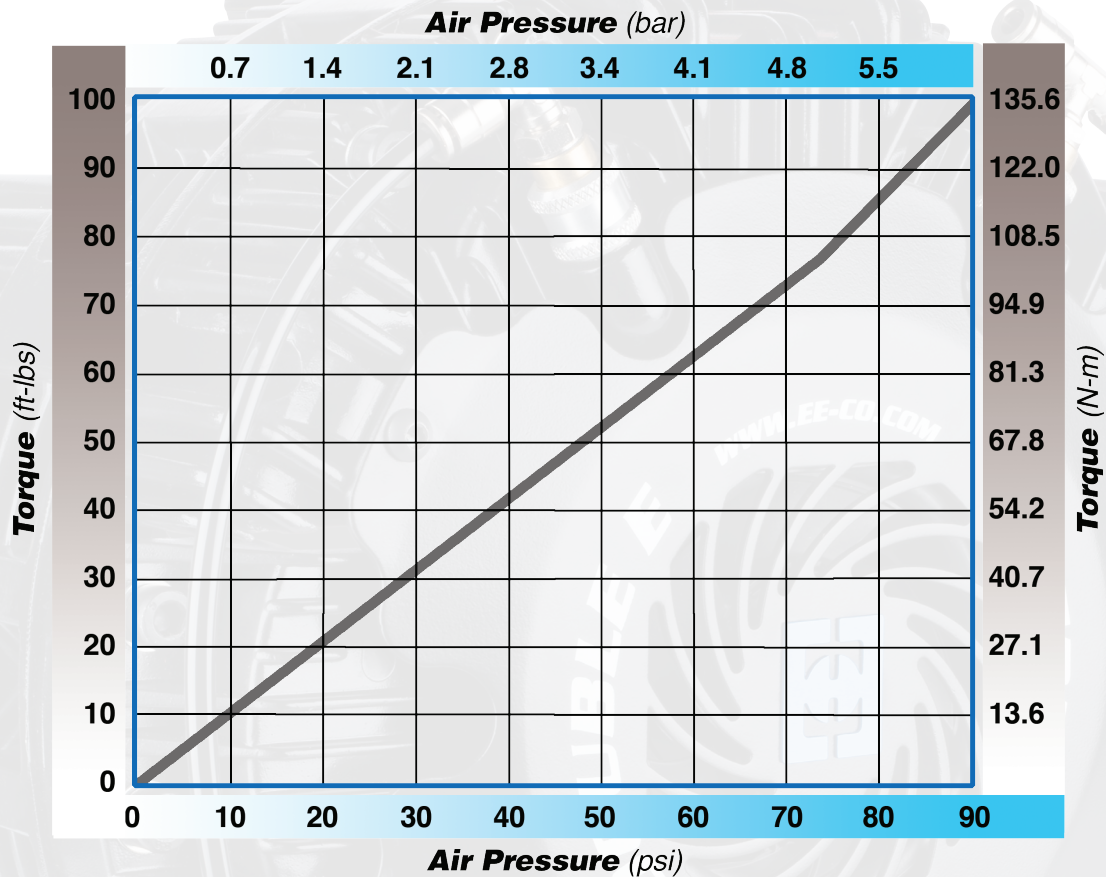


***Front***

***Back***

*Cross-drilled rotors offers superior heat dissipation lowering operating temperature and minimizing noise while offering superior brake pad life.*

## Torque Output



### Technical Specifications

Max Torque per caliper:	100 ft-lbs (135.6 N-m)
Min Torque per caliper:	1 ft-lbs (1.4 N-m)
Air pressure min / max:	3 to 90 PSI (0.2 to 6.2bar)
Max disc rotation speed:	2500 RPM
Heat Dissipation no fan:	1.5 HP (XX kW)
Heat Dissipation standard AC fan:	4.7 HP (3.5 kW)
Heat Dissipation 24VDC / 2.1A high flow fan:	6.0 HP (4.5 kW)
Reduced torque calipers:	10%, 16% and 40%



**DOUBLE E**  
Engineering Excellence

ee-co.com

