



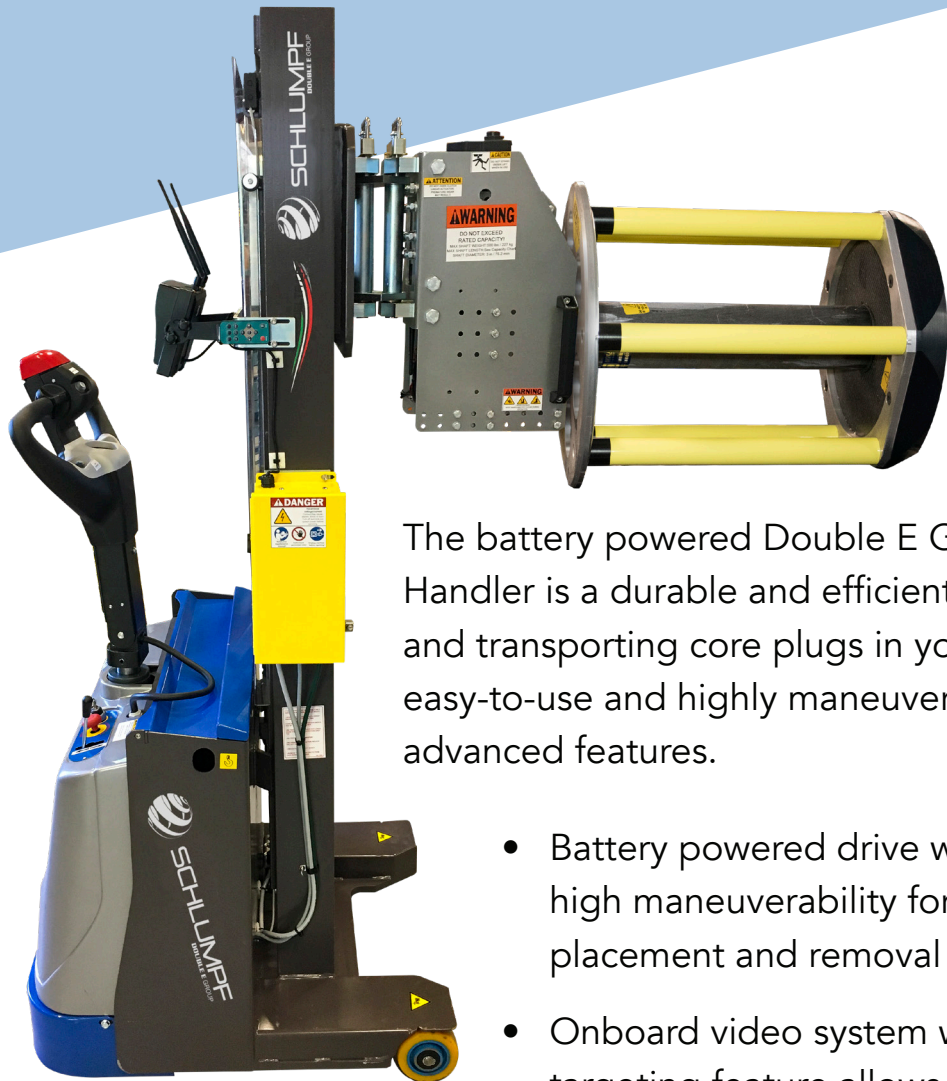
**DOUBLE E**  
G R O U P



**TISSUE MARKET  
SOLUTIONS**

[EE-CO.COM](http://EE-CO.COM)

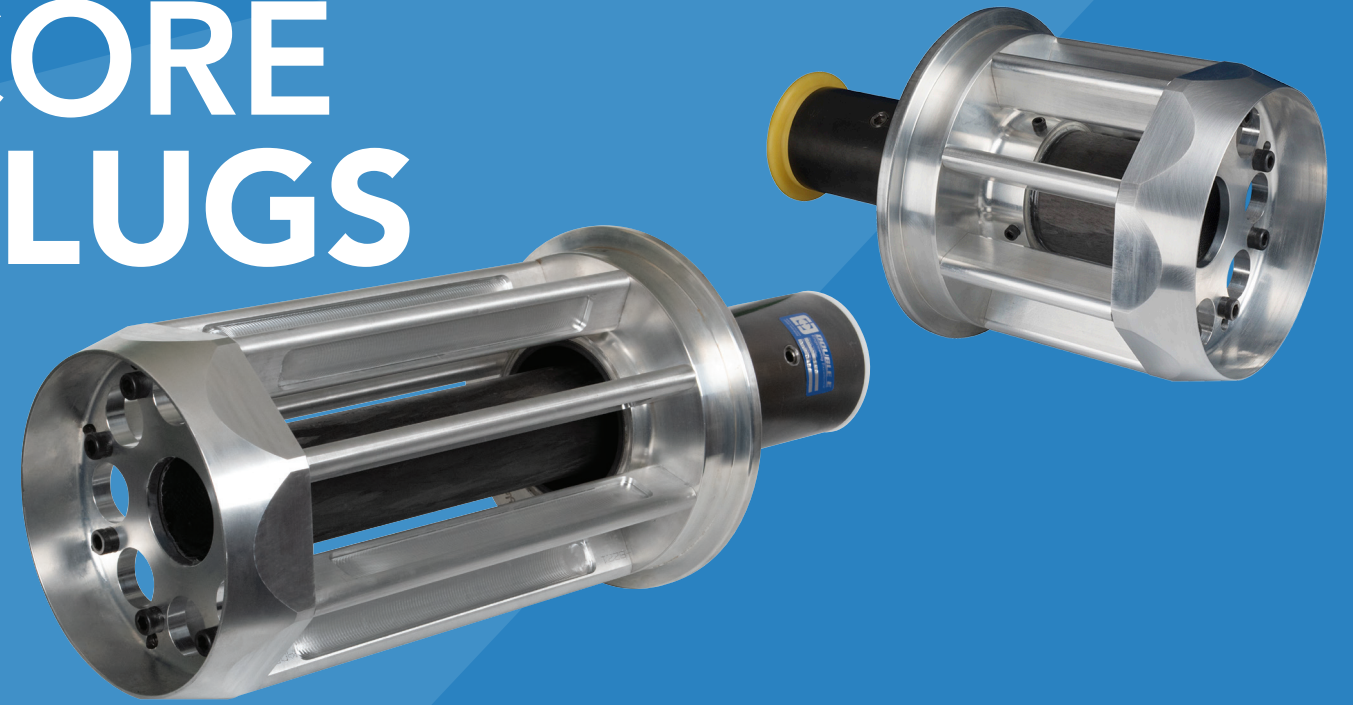
# POWERED CORE PLUG HANDLER



The battery powered Double E Group Powered Core Plug Handler is a durable and efficient solution for inserting, removing and transporting core plugs in your tissue facility. Powerful, easy-to-use and highly maneuverable, it features a number of advanced features.

- Battery powered drive with compact base allows for high maneuverability for core plug lifting, moving, placement and removal
- Onboard video system with LCD screen and laser targeting feature allows for easy and precise alignment of the Powered Core Plug Handler when placing and removing core plugs
- Powered core plug clamp is designed to securely hold the neck of core plugs for the safe lifting, transport, insertion and removal of core plugs
- Integrated controls offer ease-of-use and greater flexibility when lifting, moving and placing core plugs

# CORE PLUGS



Double E Group introduced the tissue industry's first lightweight core plug in 1999 with the launch of the CP-1000. Its innovative lightweight construction and easy-insert design improved both productivity and operator safety. Since then, Double E Group's dedication to innovation has driven continuous advancements in core plug technology through the use of advanced composites, lightweight materials, and advanced processes to provide increased performance and higher safety standards.

In 2016, one of the world's largest tissue producers challenged us to develop a new lightweight, operator-friendly core plug designed exclusively for their operations. The result was the CPLW-1000.

## CPLW-1000

Double E Group's CPLW-1000 features a ultra-lightweight design built around a carbon fiber central carrier beam and high-performance aluminum ribs. Its easy-insert end cap plate simplifies handling and installation, improving operator efficiency and ease of use.

The result is a core plug that is significantly easier to maneuver, helping to reduce strain on operators and improving overall safety. By replacing older, heavier designs, the CPLW-1000 helps minimize lifting-related injuries while delivering consistent performance on your line.



# REEL SPOOL SHAFTS

HCRS-2000

LOWER INERTIA / LIGHTER WEIGHT

- **Increase** critical speeds and run heavier rolls without increasing core diameter
- **Load capacity** is equal to or greater than steel; wind larger rolls while keeping hoisting requirements the same
- **Proprietary** carbon fiber and aluminum construction yields unmatched strength-to-weight ratio
- **Convenient** air operation with independent bladders for fail-safe operation and guaranteed roll security
- **High quality** materials for exceptional performance and low maintenance
- **Custom** journals, bearing housings and drive/brake drums
- **Reduced** deflection and minimized vibration
- **Traditional** non-expanding models are also available, as well as custom solutions for special applications

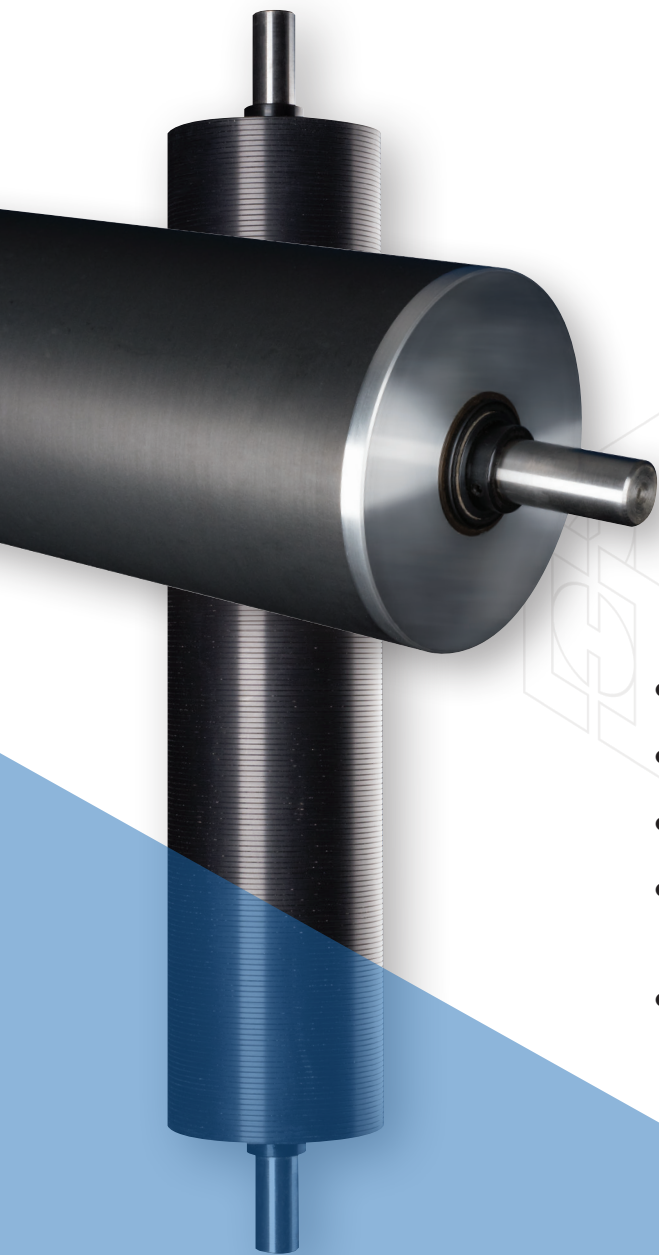
*Revolutionary reel spools allow faster machine speeds and heavier roll weights.*

# CARBON FIBER ROLLERS

## ROLLERS

With Double E Group carbon fiber rollers in place, machines can run at faster speeds and the web is far less likely to drag and get damaged. These improvements in performance directly affect productivity and increase machine throughput.

- Low-Inertia, low-drag idler rollers
- Respond immediately to changes in web speed
- Less vibration at higher speeds
- Carbon fiber idler rollers are designed for reduced weight and high critical speed
- Lightweight, low-inertia idler rollers allow faster web speeds, reduce vibration, decrease waste, and improve product quality



# BOWED ROLLERS

## BOWED / SPREADER ROLLERS

- Provide uniform tension across the web
- Gently eliminates wrinkles
- Available in steel or rubber coated
- Available in fixed or adjustable bow models



## MARIO COTTA X-50



- **Easy to upgrade** – direct replacement for common holders
- **Removable and reversible** blade cartridge allows cutting on both sides of the anvil with the same cartridge. Switch to a new cartridge in seconds

- Precise setup control uses three simple settings for repeatable, error-free setup
- Calibrated depth knob adjusts vertical stroke after sharpening of blades – just dial in the diameter
- Solid body construction minimizes vibration and yields exceptional cut quality
- The X-100 holder is ideal for high-speed applications

# KNIFE HOLDERS

## PNEUMATIC KNIFE HOLDERS

Highest quality of cut, longer blade life, minimized dust



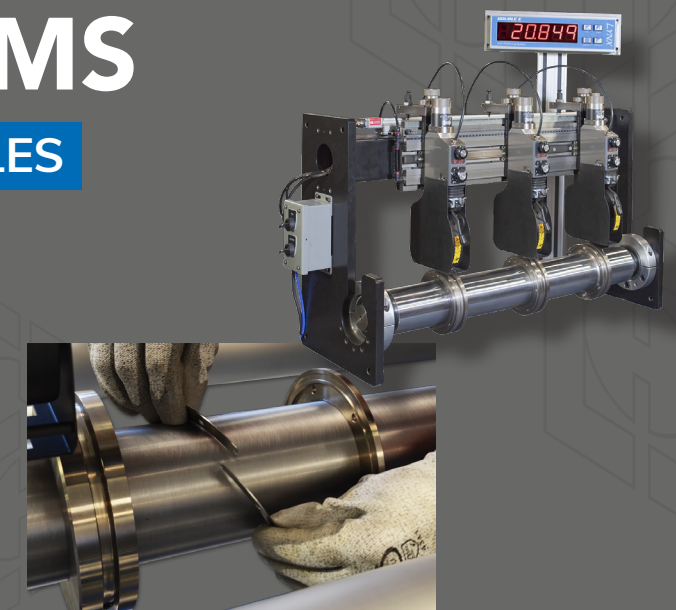
## MARIO COTTA X-75

# SLITTING SYSTEMS

## SLITTING STATIONS AND MODULES

Custom drop-in modules for upgrading old slitting equipment or to add slitting to an existing converting process.

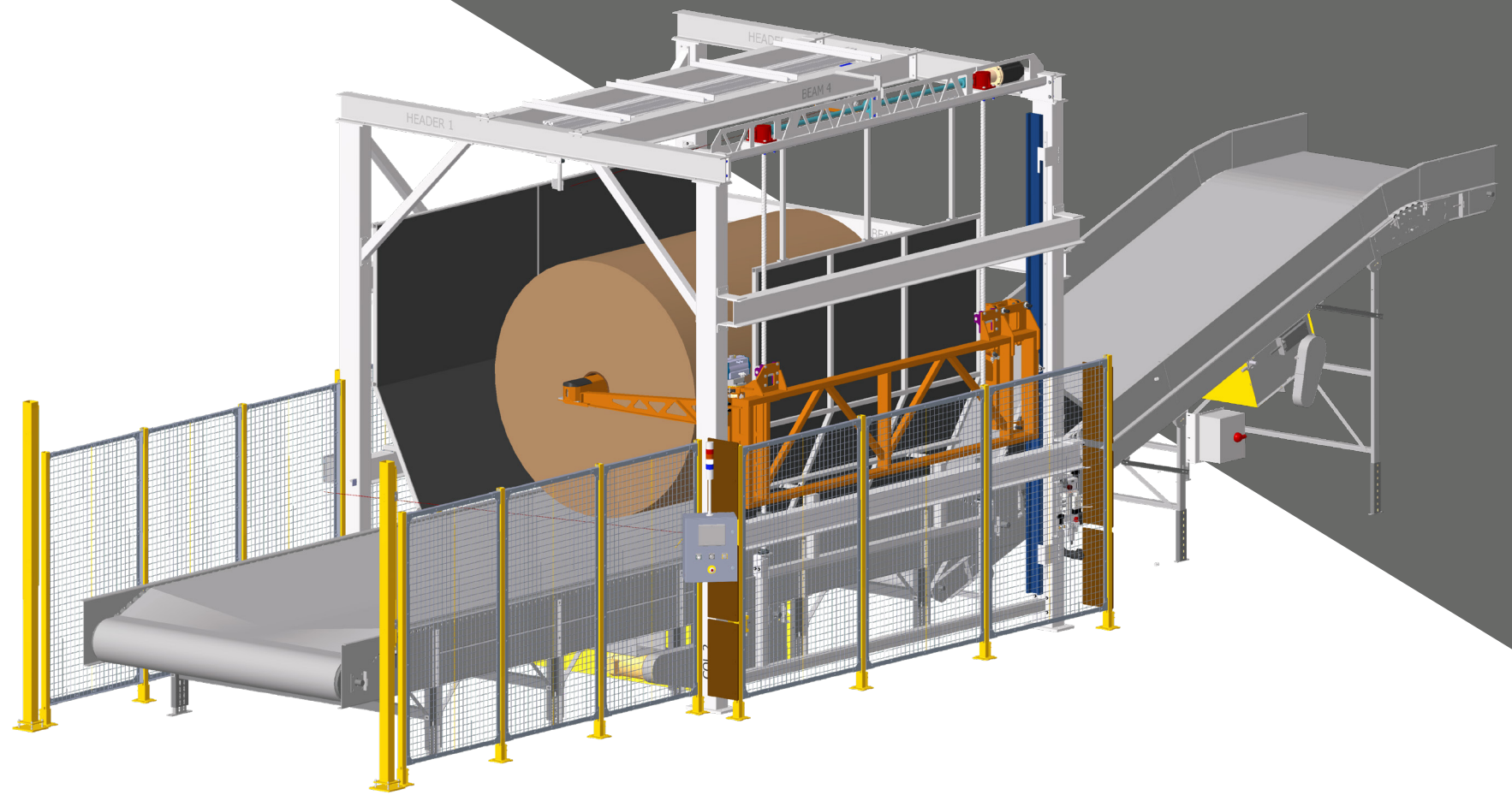
Manual, digitally assisted, and fully automatic versions are available featuring the Expandette bottom knife, which enables quick and easy cutting ring changes without removing the shaft.



# BUTT AND MASTER ROLL SLABBERS

## APPLETON BUTT ROLL SLABBER

The **Butt Roll Safe-Slab™** offers a safe, productive and hands-free slabbing solution for butt rolls. Machine operators are removed from the cutting process and slabbing occurs within a wire mesh enclosure. The **Butt Roll Safe-Slab™** features interlocking doors for added safety. The slabbing is performed by the automated cutting mechanism and is activated by the operator via push button control. The operator only has to load the butt roll onto the slabbing arm, the rest of the slabbing process is controlled via the externally mounted operator control panel.



## APPLETON MASTER ROLL SLABBER

The **Master Roll Safe-Slab™** can be installed as a standalone operation, or to function with existing workflows providing seamless integration for a high level of automation. Safety is achieved by placing the blade and cutting area within an enclosure that requires no direct interaction from the operator. Once the master roll is loaded onto the slabbing arm, the operator simply presses a button and the roll is lifted into cutting position. The Master Roll Safe-Slab's automated cutting mechanism can achieve a higher pace of safe and precise cutting than manual cutting using dangerous utility knives.

The overall design parameters of the **Master Roll Safe-Slab™** can be modified to fit a wide variety of installation needs. Changes can be made to the cutting process to accommodate a variety of materials as well as differing capacities.

# ROLLMOVER

## APPLETON ROLLMOVERS

The **RollMover™** features rugged steel frame construction and excellent versatility in moving rollable loads and has proven itself in the field year after year. It is available in three models for moving paper, tissue, fiberglass, rubber membranes and many other rollable goods. Appleton also offers a convenient Demo Program so customers may experience the benefits of the RollMover™ before buying. No electric cords or pneumatic hoses to trip over, no more injuries from pushing heavy loads. The RollMover™ will do the job, safe and sure.



## ROLLMOVER™ LR

The **RollMover™ LR** offers all the power and durability of our other models along with a large, contoured drive roller designed for damage-free moving of soft material rolls, including tissue, fiberglass mat and nonwoven loads weighing in excess of 20,000 lbs.



### INNOVATION

For over 50 years Double E Group has spearheaded the advancement of new technologies and solutions in the converting industry



### HIGH QUALITY

Double E Group products are built to withstand the demanding environment that converting requires while increasing efficiency and safety



### CUSTOM ENGINEERING

Double E Group's industry-experienced engineering team is ready and able to tackle your toughest custom projects



### CUSTOMER SERVICE

Double E Group's highly-trained and experienced technical and sales support teams are ready to help

SCAN ME!



**DOUBLE E**  
G R O U P



**DOUBLE E**  
G R O U P



**DOUBLE E**  
G R O U P

319 Manley St  
West Bridgewater MA, 02379

**PHONE:** (508) 588-8099

**FAX:** (508) 580-2915

**EMAIL:** [info@ee-co.com](mailto:info@ee-co.com)

[EE-CO.COM](http://EE-CO.COM)