



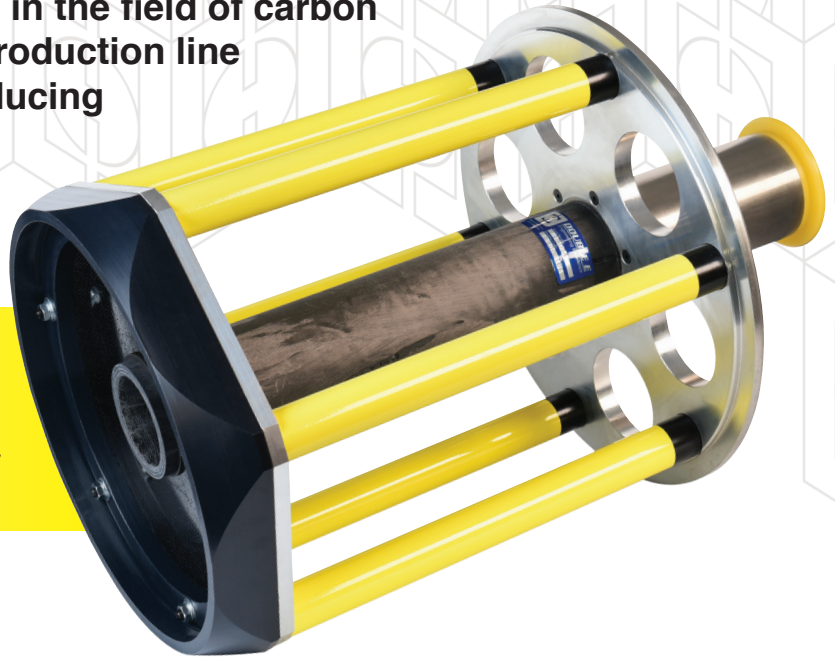
**DOUBLE E**  
Engineering Excellence

# CFCP-1000

## Ultra-Light Core Plug

The Tissue Industry's lightest core plug, the NEW CFCP-1000 Ultra-Lightweight Core Plug is the result of Double E's continuous research and development in the field of carbon fiber technology. Its addition to your production line will immediately increase safety by reducing the lifting-related injuries associated with older and heavier core plugs.

**30 to 40% lighter than the existing lightweight plugs currently on the market!**



- One-piece, Ultra-Lightweight design
- Dramatically increases operator safety
- Carbon fiber central carrier beam, ribs, and end cap plate
- Replaceable UHMW polymer journal
- Based on Double E's proven Core Plug designs

CFCP-1000 Weight		
Weights based on 8" (203.2 mm) long neck*, 19" (482.6 mm) insertion, no clamp collar		
	Neck Diameter	
Core Plug OD	4" (101.6 mm)	5" (127 mm)
10" (250 mm)	22.9 lbs (10.4 kg)	25.9 lbs (11.8 kg)
12" (300 mm)	25.6 lbs (11.6 kg)	28.7 lbs (13.0 kg)
16" (400 mm)	32.2 lbs (14.6 kg)	35.3 lbs (16.0 kg)
*for alternate neck lengths, add/subtract	0.66 lbs/inch (0.12 kg/cm)	0.84 lbs/inch (0.15 kg/cm)

Clamp Collar Weight		
	Neck Diameter	
Collar Material	4" (101.6 mm)	5" (127 mm)
Aluminum	0.7 lbs (0.3 kg)	0.9 lbs (0.4 kg)
Steel	2 lbs (0.9 kg)	4.2 lbs (1.9 kg)

# Double E Offers a Full Range of Core Plugs

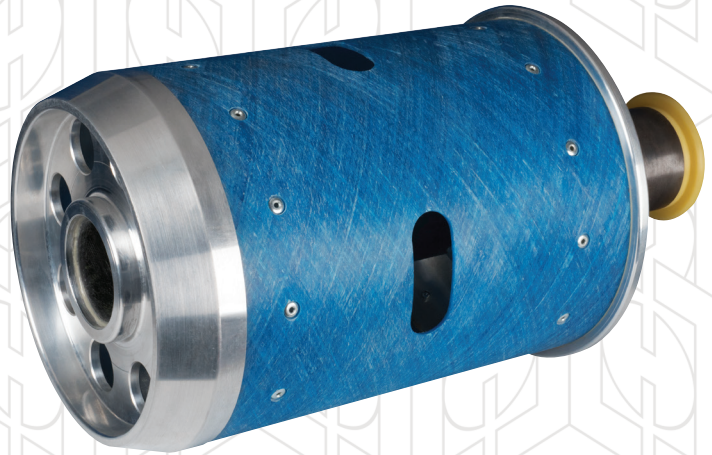
## CP-2000

Light weight for easy lifting and handling

Single-step insertion

Advanced materials offer drastic weight reduction while maintaining high strength and durability

- One-piece lightweight design
- Wound fiberglass, or cast nylon, outer body
- Carbon fiber carrier beam
- UHMW polymer journal



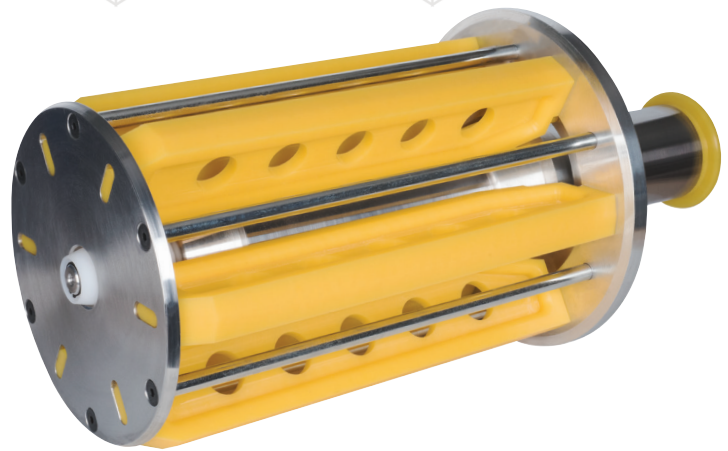
## MCP-2000

Grips cores to keep plug centered and to allow for variations in core ID

Activating shaft can be used with various cage sizes to reduce costs when running multiple core sizes

Lightweight, strong, and durable

- Patented two-piece design
- Expanding cage
- Carbon fiber based activating shaft
- UHMW polymer ribs and journal



## CP-1000

Easy handling, single-step insertion

Lighter than most existing plugs

Durable, high-strength solution

Least expensive Double E core plug

- Patented one-piece design
- Heat-treated steel body
- UHMW polymer journal



**DOUBLE E**  
Family of Converting Industry Specialists



319 Manley Street • West Bridgewater, MA 02379 • (508) 588-8099 • ee-co.com